

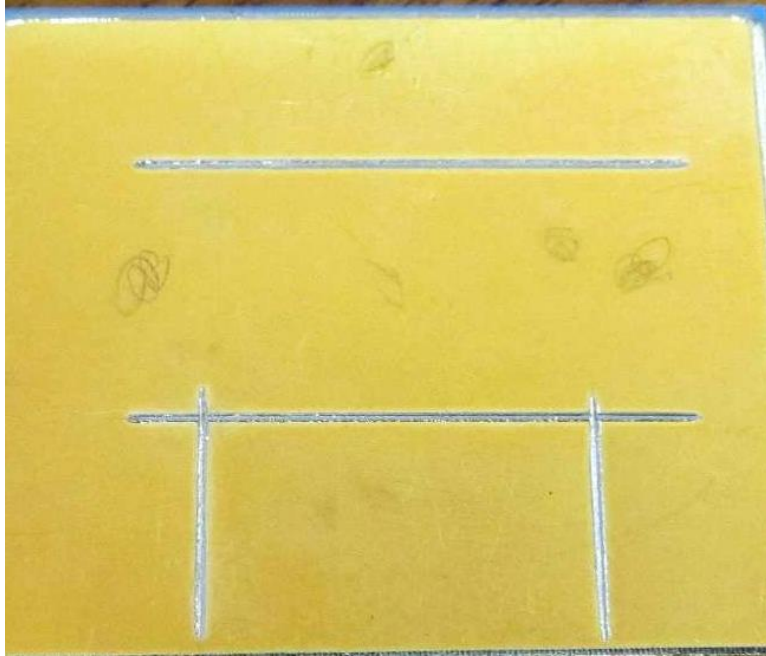


DH-8000 Weld Integrity Inspection

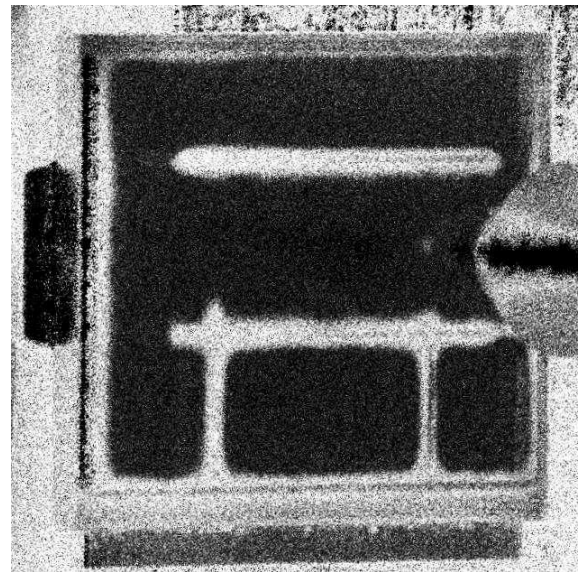
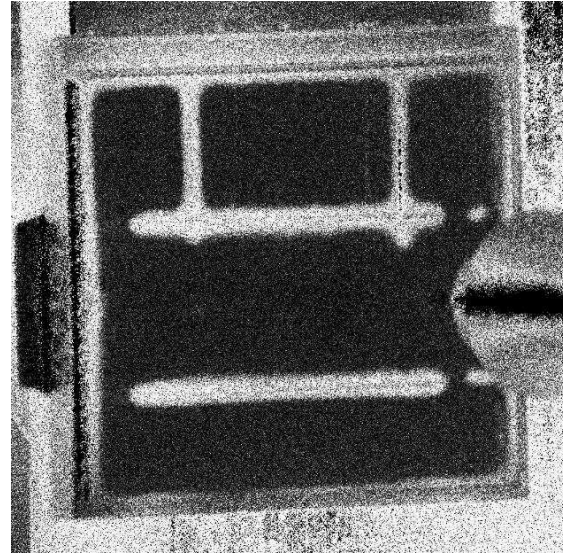
Vacuum chamber on left and laser and camera on right.



Weld Integrity Inspection



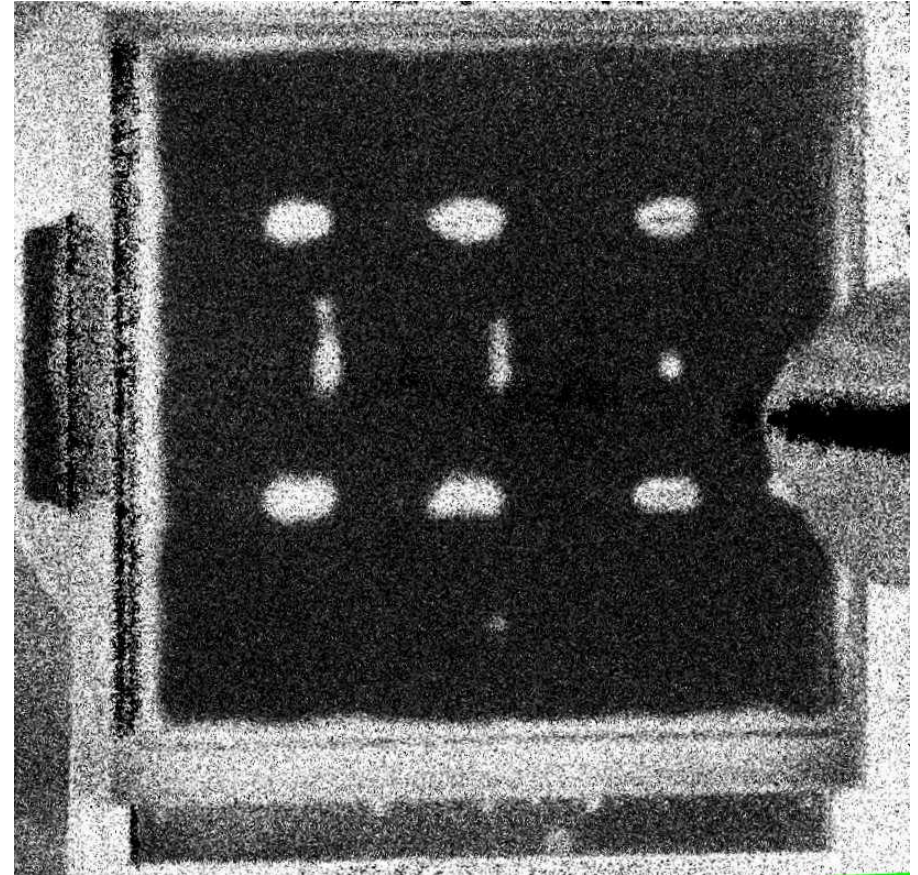
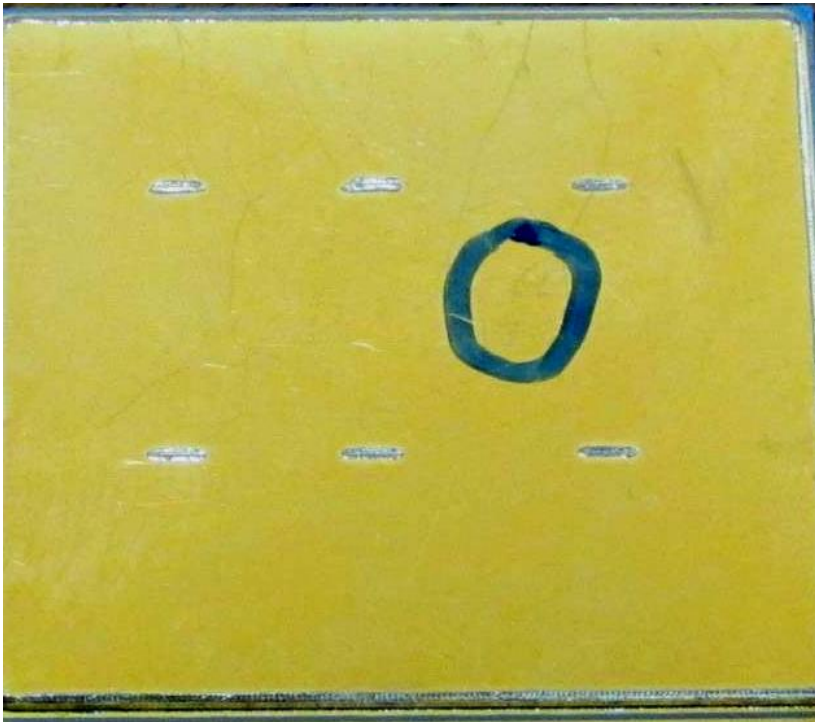
- Holographic images
- Same technology as OLT



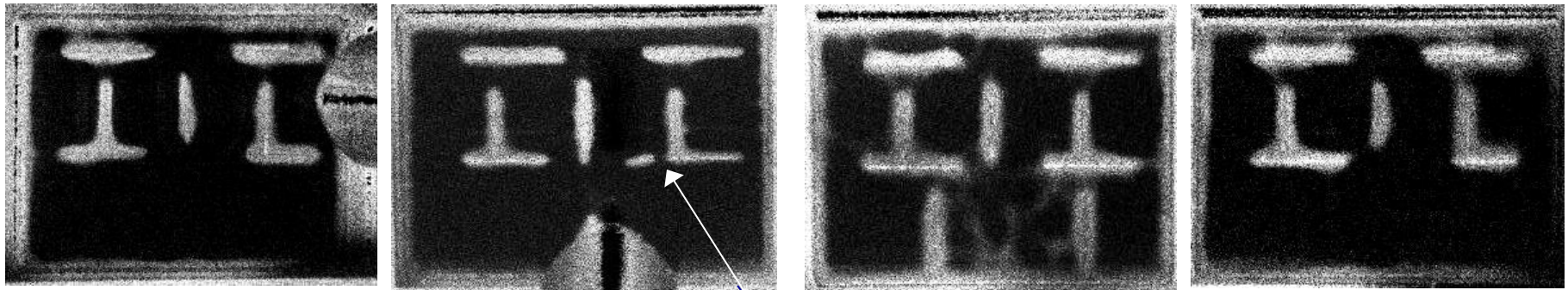
Weld Integrity Inspection

- Requirement for inspecting internal welds in electronic packages.
- Holography can be used to verify that internal welds on metal walls for EMC control are properly made.
- If no weld and wall touches the top cover could give false indication of a pass.
- Need vacuum chamber to slightly pull lid up so there is a mechanical gap and can be detected.

Weld Integrity Inspection



Weld Integrity Inspection



Gap in weld